



IGBT吸收电容器 Snubber capacitor for IGBT

■ 外形图 Outline Drawing

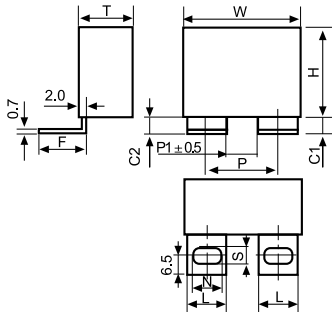


图1 (Style 1)

L x F x N x S=14.0 x 16.0 x 10.2 x 6.2

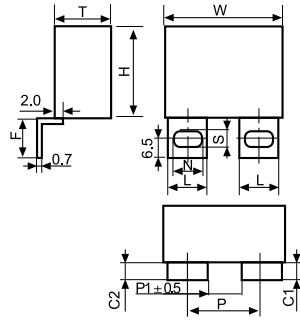
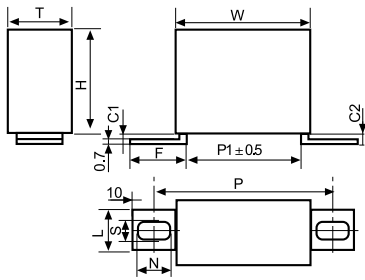


图2 (Style 2)



L x F x N x S=14.0 x 22.0 x 11.2 x 6.2
or
L x F x N x S=12.0 x 22.0 x 11.2 x 6.2

图3 (Style 3)

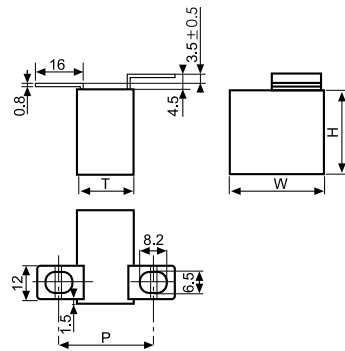


图4 (Style 4)

■ 特点

- 广泛应用于高压高频脉冲电路中
- 损耗小，内部温升小
- 优异的阻燃性能
- 适合作为IGBT的吸收电容

■ Features

- Widely used in high voltage, high frequency circuit
- Low loss and small inherent temperature rise
- Excellent active and passive flame resistant circuit
- Especially designed as snubber capacitor for IGBT

■ 技术要求 Specifications

引用标准 Reference Standard	GB/T 17702 (IEC 61071)	
气候类别 Climatic Category	40/85/56	
工作温度范围 (外壳最高温度点) Operating temperature range (Max. temperature of case surface)	-40°C ~ 85°C	
额定电压 Rated Voltage	700Vdc ~ 2000Vdc	
电容量范围 Capacitance Range	0.1 μF ~ 5.0μF	
电容量偏差 Capacitance Tolerance	J(± 5%), K(± 10%)	
耐电压 Voltage Proof	1.6U _N (10s)	
损耗角正切 Dissipation Factor	≤ 0.0005 (1kHz, 20°C)	
绝缘电阻 Insulation Resistance	≥ 100 000MΩ, C _N ≤ 0.33μF	(20°C , 100Vdc, 1min)
	≥ 30 000s C _N > 0.33μF	
预期寿命 Expected lifetime	≥ 100 000hrs @ U _N , Θ _{hs} =70°C	

Snubber capacitor for IGBT

尺寸 Dimensions(mm)

vdc	Cap	Dimensions			Irms	Peak	ESR _{Typical}	ESL	dv/dt	Pkg	Part Number
	Value	W	H	T	100KHz	Current	100KHz			Qty	
	uF	mm	mm	mm	A @70°C	A	mΩ @70°C			pcs	
700/850	0.47	42.5	40	20	14	357	9.4	40	760	65	
700/850	0.68	42.5	40	20	17	517	6.6	40	760	65	
700/850	1	42.5	40	20	20	760	4.6	40	760	65	
700/850	1.5	42.5	37	28	27	1140	3.1	36	760	45	
700/850	1.5	42.5	35.5	33.5	28	1140	3	36	760	28	
700/850	2	42.5	45	30	34	1520	2.4	43	760	40	
700/850	2.2	42.5	45	30	35	1672	2.2	43	760	40	
700/850	2.5	57.5	45	30	37	1175	2	45	470	20	
700/850	3	57.5	45	30	30	1410	3.5	45	470	20	
700/850	3.3	57.5	45	30	31	1551	3.2	45	470	20	
700/850	4	57.5	50	35	34	1880	2.6	48	470	15	
700/850	5	57.5	50	35	40	2350	2.2	48	470	15	
1F00	0.47	42.5	40	20	14	400	8.7	40	850	65	
1F00	0.68	42.5	40	20	18	578	6.1	40	850	65	
1F00	1	42.5	40	20	20	850	4.6	40	850	65	
1F00	1.5	42.5	37	28	28	1275	2.9	36	850	45	
1F00	1.5	42.5	35.5	33.5	29	1275	2.8	36	850	28	
1100	2	42.5	45	30	35	1700	2.3	43	850	40	
1100	2.2	57.5	45	30	28	1166	4.4	45	530	20	
1100	2.5	57.5	45	30	29	1325	3.8	45	530	20	
1100	3	57.5	45	30	31	1590	3.2	45	530	20	
1100	3.3	57.5	45	30	32	1749	3	45	530	20	
1100	4	57.5	50	35	38	2120	2.5	48	530	15	
1200	0.33	42.5	40	20	13	330	10.9	40	1000	65	
1200	0.47	42.5	40	20	16	470	7.7	40	1000	65	
1200	0.68	42.5	40	20	19	680	5.4	40	1000	65	
1200	1	42.5	37	28	25	1000	3.8	36	1000	45	
1200	1.2	42.5	37	28	27	1200	3.2	36	1000	45	
1200	1.2	42.5	35.5	33.5	28	1200	3	36	1000	28	
1200	1.5	42.5	45	30	32	1500	2.6	43	1000	40	
1200	2	57.5	45	30	27	1200	4.1	45	600	20	
1200	2.2	57.5	45	30	28	1320	3.8	45	600	20	
1200	2.5	57.5	45	30	30	1500	3.3	45	600	20	
1200	3	57.5	50	35	35	1800	2.9	48	600	15	
1200	3.3	57.5	50	35	38	1980	2.6	48	600	15	
2000	0.1	42.5	40	20	8	140	26.8	40	1400	65	
2000	0.15	42.5	40	20	10	210	17.9	40	1400	65	
2000	0.22	42.5	40	20	12	308	12.3	40	1400	65	
2000	0.33	42.5	40	20	16	462	8.3	40	1400	65	
2000	0.47	42.5	40	20	19	658	5.9	40	1400	65	
2000	0.68	42.5	44	24	24	952	4.1	43	1400	50	
2000	0.68	42.5	35.5	33.5	25	952	4	43	1400	28	
2000	0.82	42.5	45	30	28	1148	3.5	43	1400	40	
2000	1	57.5	45	30	23	900	5.9	45	900	40	
2000	1.2	57.5	45	30	25	1080	4.9	45	900	20	
2000	1.5	57.5	50	35	30	1350	4	48	900	15	